



www.hizzyproperty.co.uk



hizzy
property

21 Gallows Hill, Hadleigh, IP7 6DD

£450,000

About the property

Very rarely do one of these properties come to market! We are exceptionally proud to market this attractive three bedroom Victorian end of terrace property located a short walk from the centre of Hadleigh, lovely countryside walks and the town's cricket meadow. The property dates back to around 1850 and includes a handsome Suffolk white brick façade under a slate tiled roof along with many fine features which include lovely sash windows with a shutter to the living room, 9ft ceiling heights, fireplaces, stripped wood doors and a cellar. The living space has a light, bright and airy feel which includes a large hallway with staircase to the first floor, living room with working fireplace, dining room with fireplace, fitted kitchen, utility/wc and a useful cellar. Upstairs there is a generous landing, three bedrooms and family bathroom which includes a free standing bath. Further benefits include a beautiful South-West facing rear garden.

Outside

A truly wonderful rear garden which really has to be seen to be fully appreciated. It's generous in size and measures in excess of 130ft in length. The owners have cleverly designed the garden to include meticulously kept lawn with an abundance of trees, shrubs and plants. There are also various seating and patio areas to take in the South-West facing sun. The front garden is laid to shingle with planted trees and shrubs. Whilst there is no official parking at the property there is on-street parking available to the front. Please note there is a right of way access across the rear for the neighbour.

Useful info

All mains services are connected with the heating being gas fired via radiators (not tested by the agents). Currently a band C council tax rating with the local authority being Babergh and Mid Suffolk District Councils, Endeavour House, 8 Russell Road, Ipswich, IP1 2BX. The What3words location is ///punctuate.pardon.drove. Broadband download speed up to 71 mbps and upload speed up to 16mbps (Source Ofcom). Mobile Network indoor coverage likely on O2 and EE and limited on Vodafone and Three. Outdoor coverage likely on all four networks (Source Ofcom).



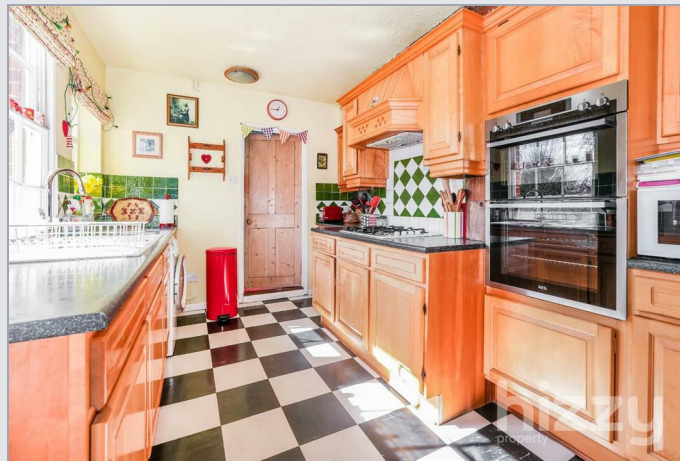
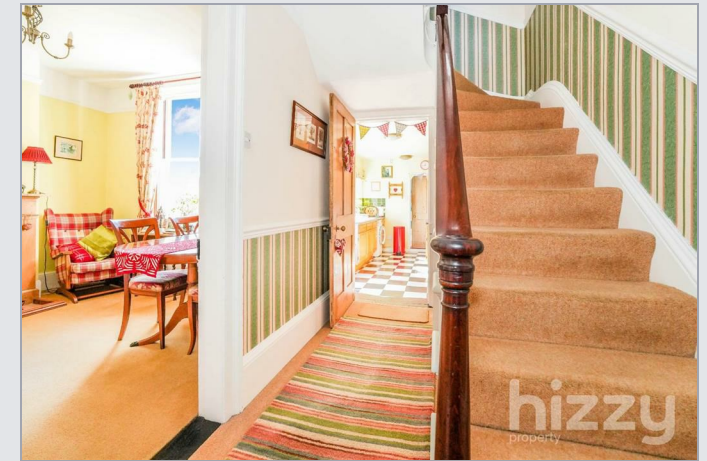
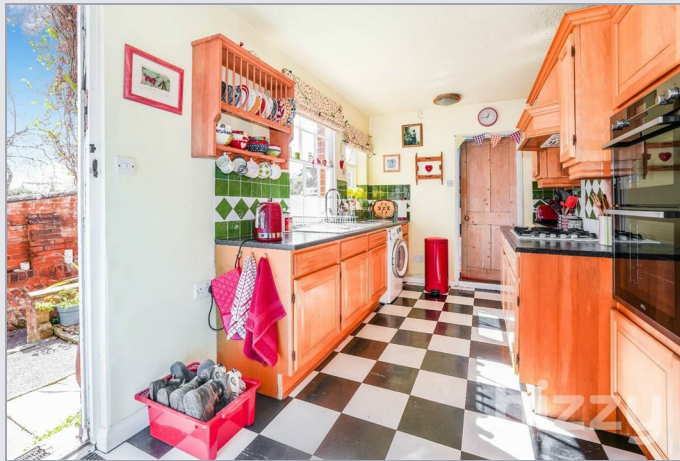


hizzu
property

- Attractive Unlisted Victorian Townhouse
- Suffolk White Brick Facade
- Impressive Living Space with 9ft High Ceilings

- Rarely Available to Market
- Large Sash Windows
- Two Reception Rooms

- Beautiful Landscaped Garden
- Close to the High Street
- Cellar

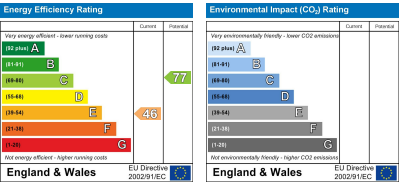




hizz
property



EPC



These particulars, whilst believed to be accurate are set out as a general outline only for guidance and do not constitute any part of an offer or contract. Intending purchasers should not rely on them as statements of representation of fact, but must satisfy themselves by inspection or otherwise as to their accuracy. No person in this firms employment has the authority to make or give any representation or warranty in respect of the property.



01473 875101
hello@hizzyproperty.co.uk